

Bringing back  
*nature*  
to sky-high living.

5 mins from Bengaluru Int. Airport





In the heart of the city,  
a garden rises to meet  
the sky.

.





Bengaluru -  
The Garden City  
that grew into  
a Silicon Valley.

.







“

Before Bengaluru became the Silicon Valley,  
it was called the ‘Garden City of India.’  
Here, nature was a way of life.



Tree-lined avenues shaded morning walks. Lush  
public gardens hosted weekend picnics under  
100-year-old trees. Birds filled the air with song, &  
open green spaces offered quiet moments in  
a fast-changing world.

As Bengaluru grew, it’s skyline soared — but the  
green fabric that once defined it began to  
unravel. Still, the spirit of the Garden City lives on.  
There is a growing movement to breathe life  
back into the city’s green legacy — and Sattva is  
proud to lead this revival.

*We’re bringing gardens back into the  
garden city, one lush, thoughtfully  
designed space at a time.*

”

Sattva Group



# VASANTA SKYE

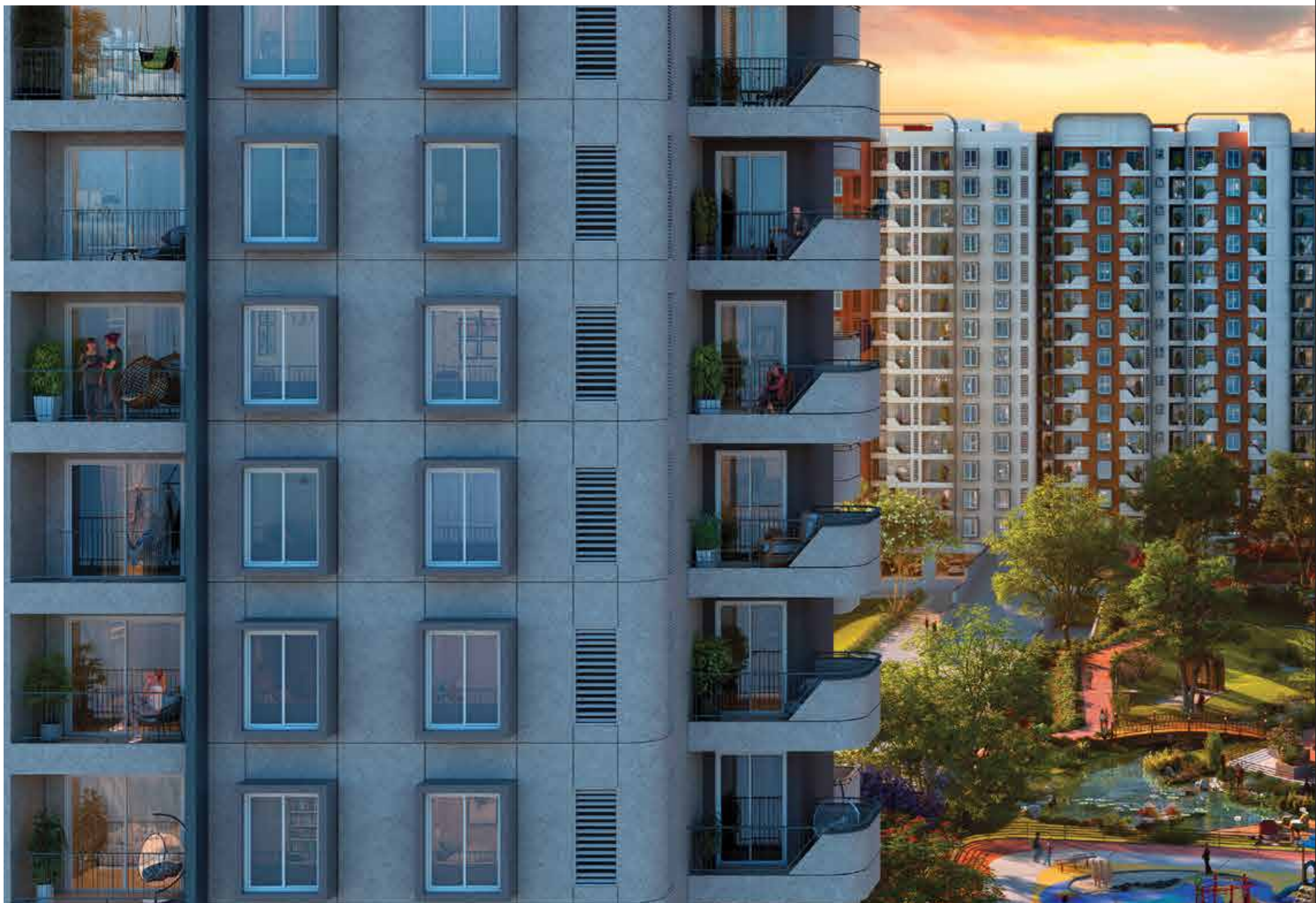
writes the next chapter  
in this revival of the Garden City.

Thoughtfully designed to bring nature to every level, Vasanta Skye transforms high-rise living into a garden-like experience — lush, calming, and alive.

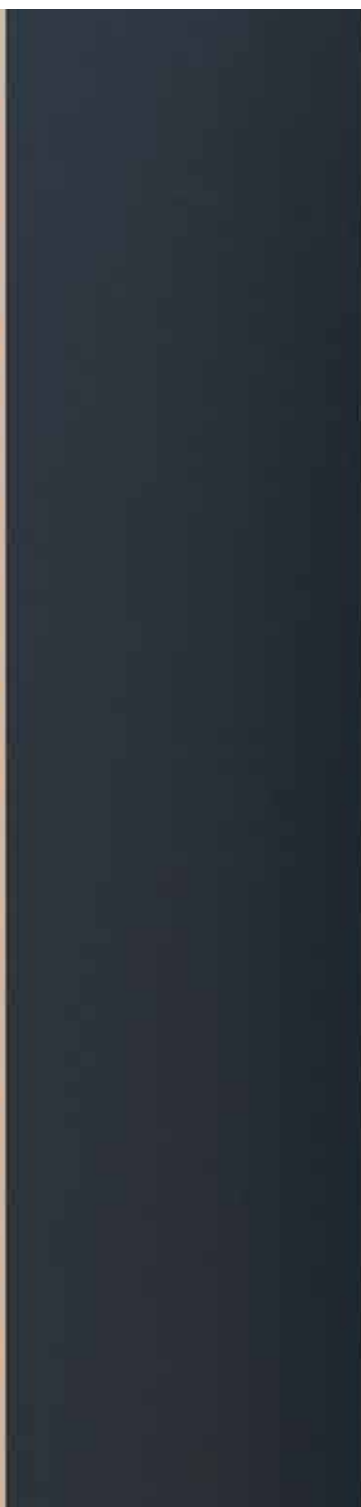














Experience high-rise  
living amidst nature's  
calm at Sattva Vasanta  
Skye, strategically located  
at the Airport Road.

•







Just minutes from Bengaluru International Airport and all major hubs, discover a life that rises above the everyday. Set in a thoughtfully designed 16-acre gated development, these premium studio to 4 BHK homes are surrounded by lush greens and expansive open spaces.

#### **PROJECT HIGHLIGHTS**

- 16 acre gated community with 1,077 premium apartments.
- 13 acres of open green spaces.
- Spacious Studio, 1, 2, 3 & 4 BHK homes (454 - 2466 sq.ft.)
- G+13 & G+14 towers with excellent ventilation & Vastu compliance.
- 1 acre luxurious clubhouse with world-class amenities.
- 6 acres of themed gardens, water features & vibrant outdoor zones.
- Sports & wellness hubs for all age groups.
- Seamless connectivity to Bengaluru Airport & other major hubs.









# A Nature-First Township

A masterplan where greenery breathes, wellness flows, community thrives, and play never stops—only at Sattva Vasanta Skye.

## LEGEND

- |                            |                       |                    |                        |
|----------------------------|-----------------------|--------------------|------------------------|
| 01. Entry/Exit             | 11. Golf Putting Hole | 22. Floor Games    | 33. Pickleball Court   |
| 02. Security               | 12. Party Lawn        | 23. Outdoor Gym    | 34. Cricket Pitch      |
| 03. Temple                 | 13. Stage             | 24. Kids Play Area | 35. Outdoor Bowling    |
| 04. Roundabout Island      | 14. Pedestrian Node   | 25. Jogging Track  | 36. Tennis Court       |
| 05. Car Parking            | 15. Reflexology Track | 26. Theme Garden   | 37. Track Games        |
| 06. Basement<br>Entry/Exit | 16. Meditation Centre | 27. Sensory Garden | 38. Futsal Court       |
| 07. Pedestrian Entry       | 17. Yoga Centre       | 28. Gazebo         | 39. Kabaddi Court      |
| 08. Bridge                 | 18. Tree Grove        | 29. Viewing Deck   | 40. Multipurpose Court |
| 09. Tree Court Plaza       | 19. Lotus Pond        | 30. Nature Trail   |                        |
| 10. Pedestrian Plaza       | 20. Forest Meadows    | 31. Orchards       |                        |
|                            | 21. Cultural Lawn     | 32. Pets Park      |                        |





# Bringing back life within reach

## 10 MINS

Vibrant Lifestyle  
& Social Scene

## 10 MINS

Quality Education  
& Healthcare

## 20 MINS

Tech park &  
Business Hubs

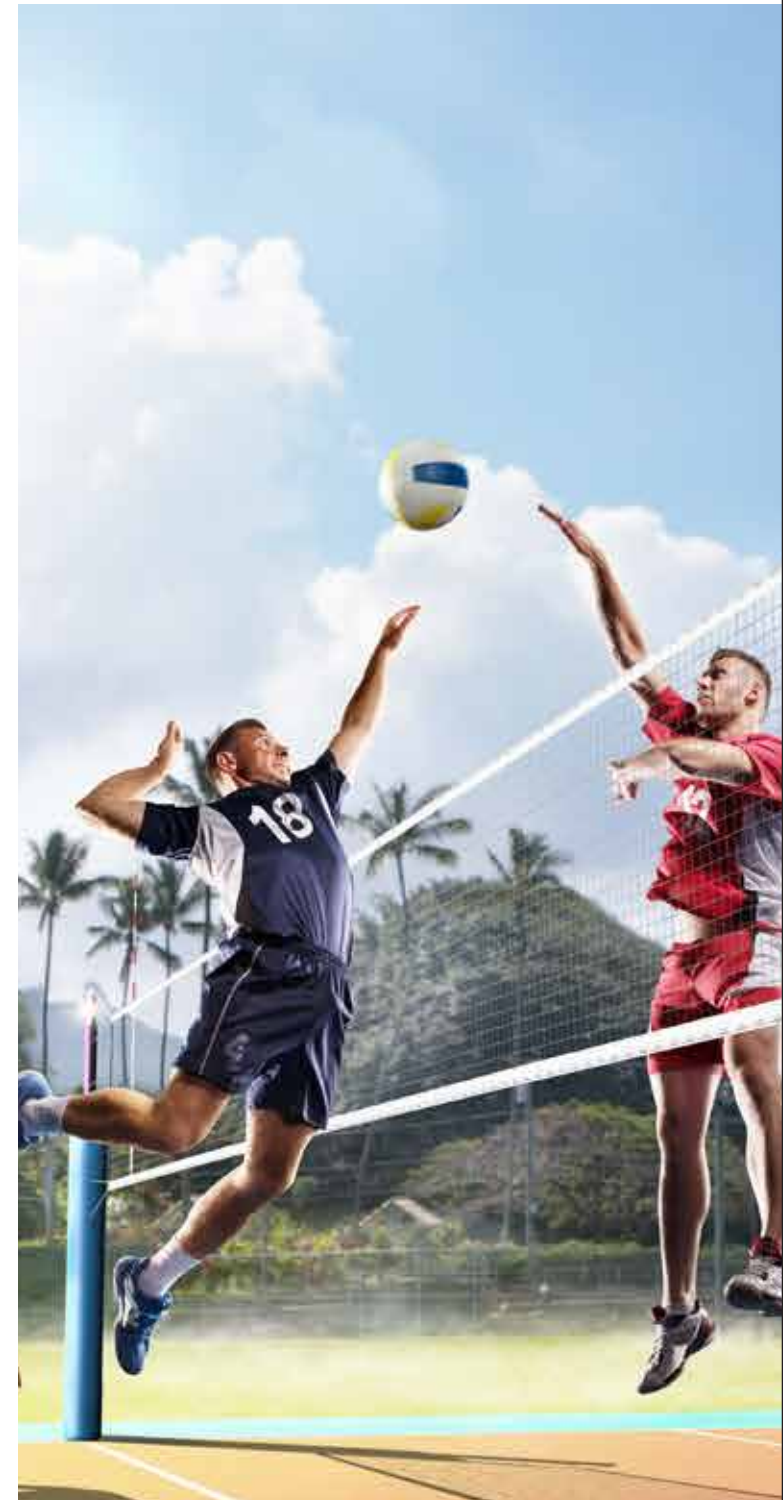
## 20 MINS

Cultural &  
Recreational Hubs









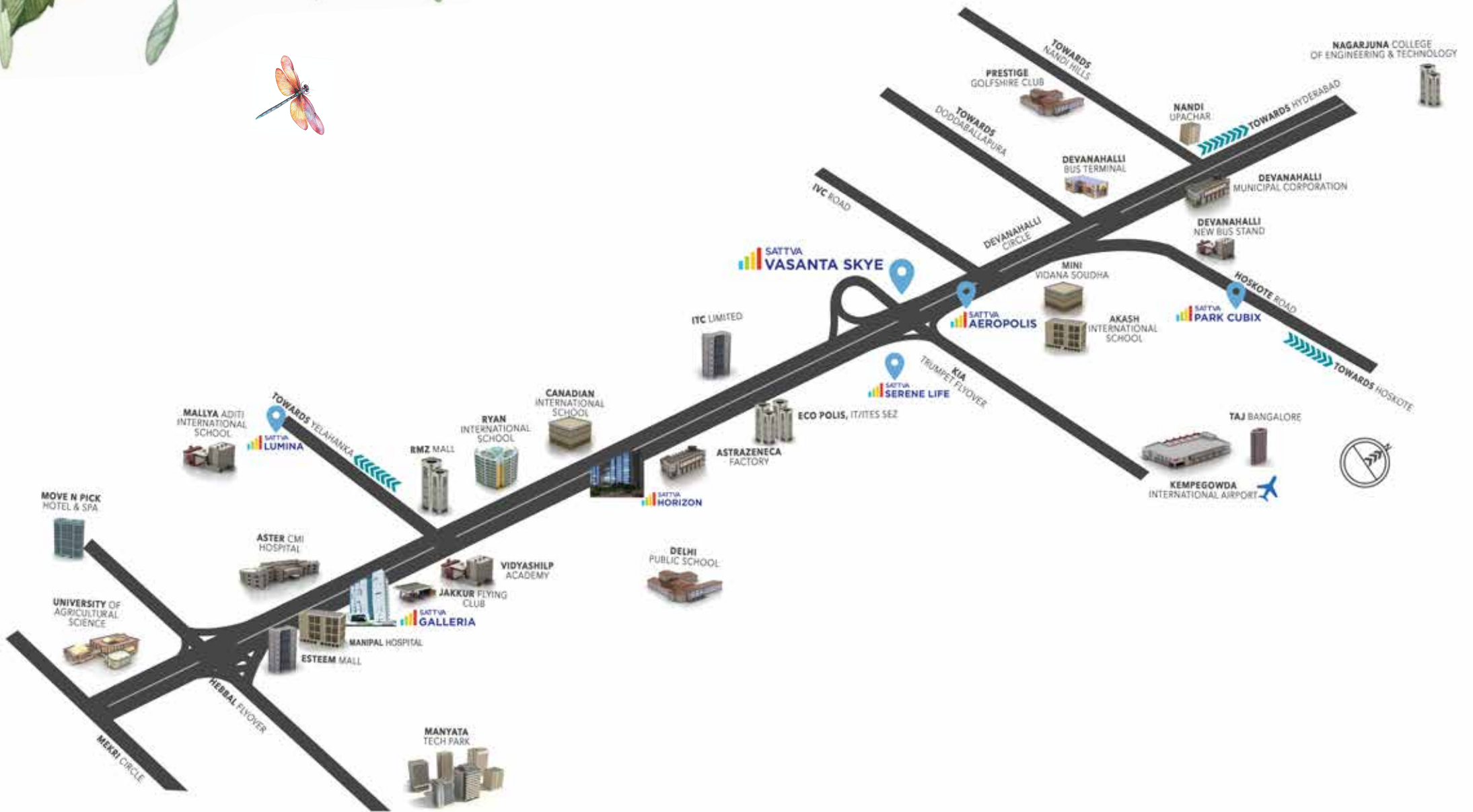




## The joy of connected neighbourhood

At Sattva Vasanta, everything you need is just around the corner—world-class sports complexes, IT and business hubs, top schools and hospitals, senior care, vibrant retail and entertainment, all surrounded by serene green spaces. It's city life, thoughtfully connected.









# All on your doorstep

5-15  
mins

## CONNECTIVITY TO AIRPORT & HIGHWAYS

NH 44 (2 min)  
Doddajala Metro Station (5 min)  
Airport Metro Station (upcoming-10 mins)  
Devanahalli Station (10 min)

15-45  
mins

## WORLD-CLASS HEALTHCARE

Akash Hospital (15 min)  
Manipal Hospital (25 min)  
Cytecure Hospital (25 min)  
Aster CMI (37 min)  
Sparsh Hospital (45 min)

10-35  
mins

## IT & COMMERCIAL HUBS

Prestige Tech Cloud (10 min)  
Signature Business Park (10 min)  
Foxconn Apple Project (10 min)  
KIADB Hardware & Aerospace Park (20 min)  
Manyata Tech Park (35 min)

0-25  
mins

## TOP EDUCATIONAL INSTITUTES

NPS School (Opposite)  
Vidyaship University (15 min)  
Harrow International School (20 min)  
Stonehill International High (20 min)  
Amity University (25 min)

10-40  
mins

## RETAIL & ENTERTAINMENT

Forum Mall (5 min)  
Club Cabana Amusement Park (10 min)  
The Galleria Mall (20 min)  
Phoenix Mall of Asia (35 min)  
Nandi Hills (35 min)

45-60  
mins

## FROM CITY CENTRE

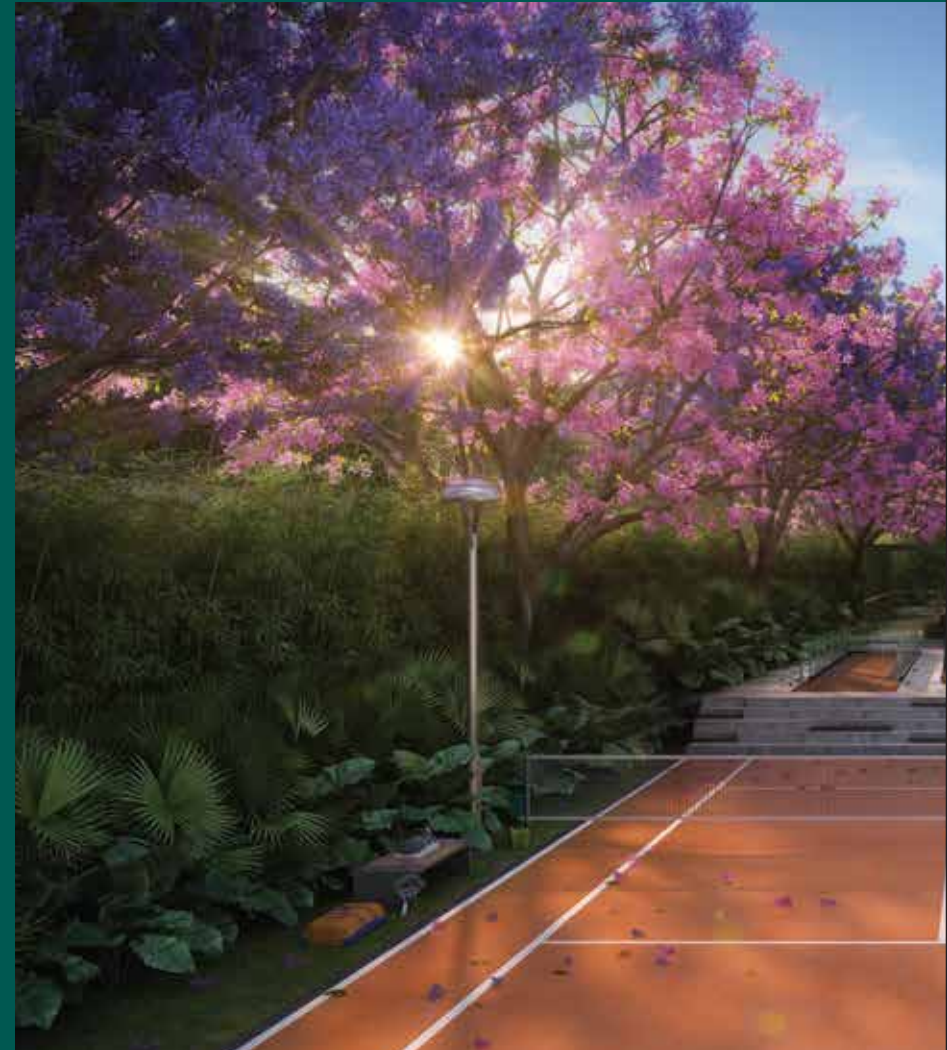
MG Road (30 min)  
Koramangala (40 min)  
Whitefield (50 min)





# Bringing back spaces that truly breathe

At Sattva Vasanta Skye, rediscover a life that feels whole—where community brings you closer, wellness nurtures your inner balance, elegance defines everyday living, and sports energize your routine. It's everything you need to live fully, all in one thoughtfully crafted space.









Sattva Vasanta





## Bringing back nature's way in

Where every arrival feels like a serene homecoming.

- Entry/Exit
- Security
- Basement Entry/Exit
- Car Parking
- Pedestrian Entry
- Bridge
- Roundabout Island
- Pedestrian Plaza
- Pedestrian Node











## Bringing back the soul of community

Reconnect with people and the planet in soulful spaces surrounded by nature.

- Temple
- Meditation Centre
- Yoga Centre
- Party Lawn
- Cultural Lawn
- Tree Grove
- Forest Meadows
- Lotus Pond
- Nature Trail
- Theme Garden
- Sensory Garden
- Pets Park
- Viewing Deck
- Orchards
- Gazebo
- Kids Play Area
- Reflexology Track
- Floor Games
- Tree Court Plaza











## Bringing back energy to your routine

Every game, every goal, every sprint —  
surrounded by greenery and fresh air.

- Golf Putting Hole
- Cricket Pitch
- Futsal Court
- Kabaddi Court
- Pickleball Court
- Tennis Court
- Multipurpose Court
- Outdoor Bowling
- Track Games
- Outdoor Gym
- Jogging Track

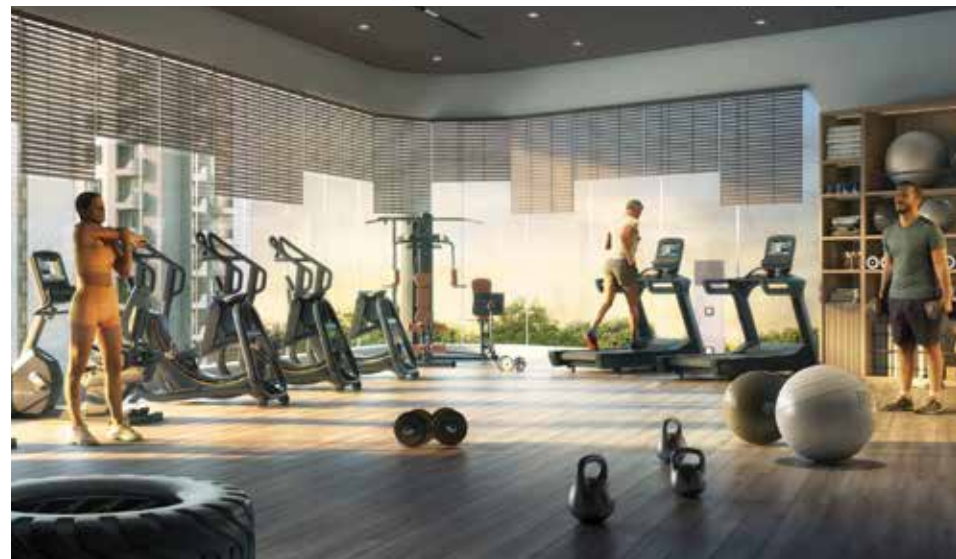




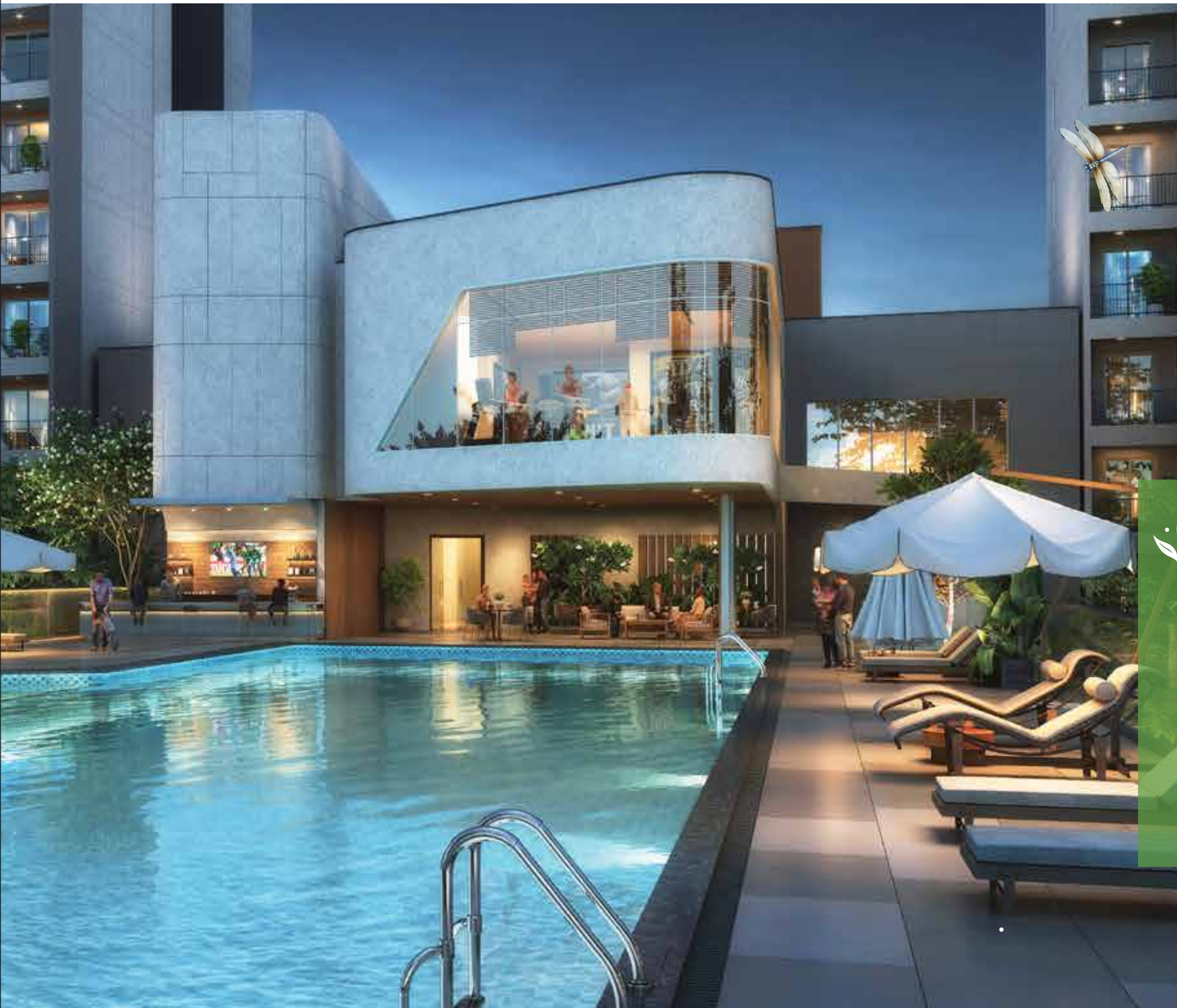


## Bringing back grace to modern life

Unwind in style at a world-class,  
1-acre clubhouse—crafted for  
exclusivity and everyday luxury.







- Multipurpose Hall
- Swimming Pool
- Indoor Games
- Billiards
- Table Tennis
- Aerobics and Yoga
- Gym
- Squash
- Badminton







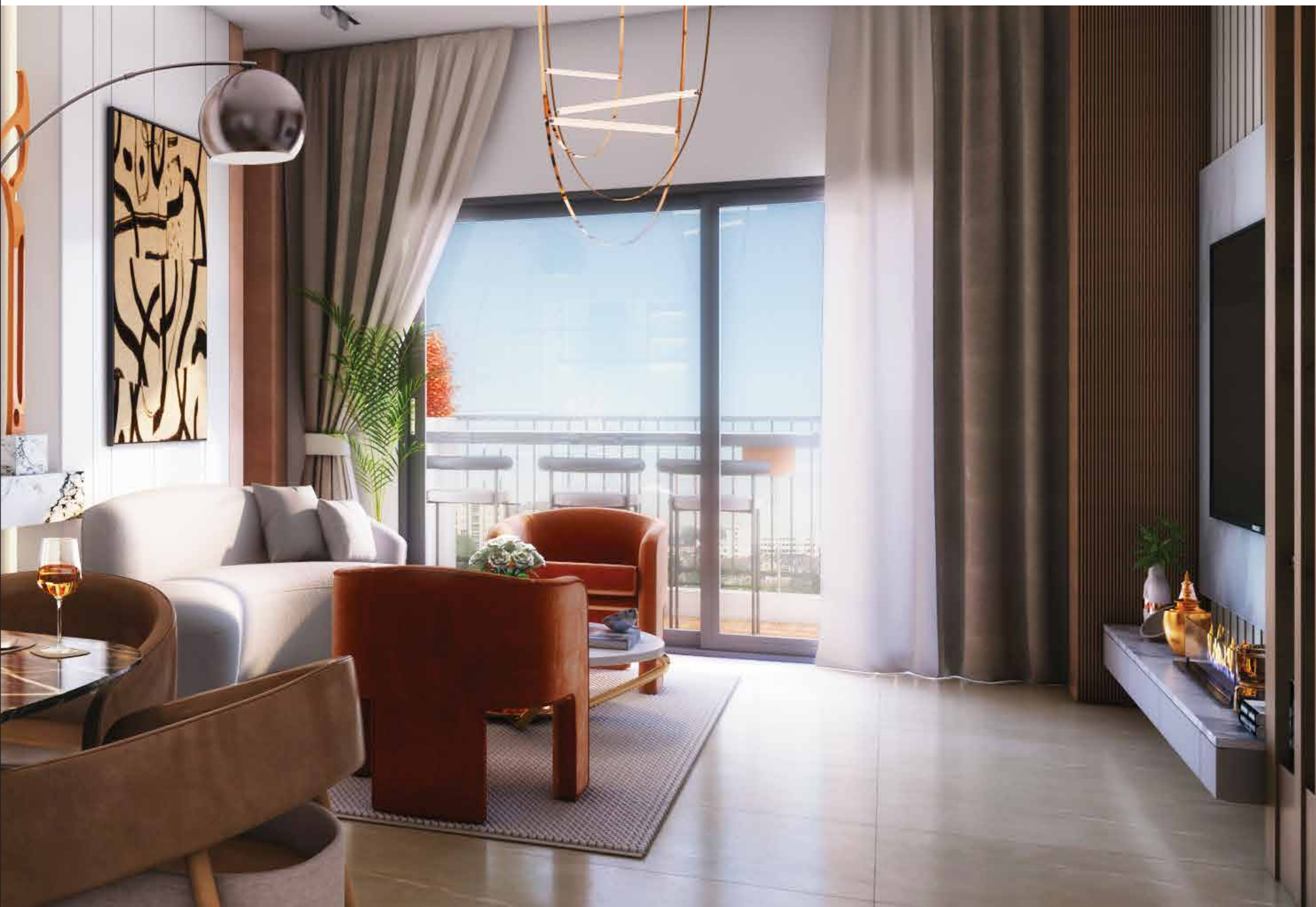
## Bringing back the art of fine living

At Sattva, every detail is crafted to offer a life of comfort, elegance, and effortless harmony with nature.



















Corporate Office: Sattva Group, Sattva Windsor, No.3, Ulsoor Road, Bengaluru - 560 042, Karnataka, India.

BENGALURU | HYDERABAD | MUMBAI | PUNE | CHENNAI | KOLKATA | GOA | COIMBATORE



A Crisil 'A' STABLE RATED COMPANY  
Founding Member IGBC



An ICRA 'A' STABLE RATED COMPANY  
ISO 9001, 14001 & 18001 CERTIFIED

Toll Free: 1800 121 33 44 | Ph: +91 80 4269 9000 | [www.sattvagroup.com](http://www.sattvagroup.com)

RERA No: PRM/KA/RERA/1250/303/PR/080525/007730

DISCLAIMER : The brochure is purely conceptual in nature and is by no means a legal offering. The promoters reserve the right to change, delete or add any specifications or plans mentioned herein. Furniture layout is indicative only.



SCAN FOR MORE INFO